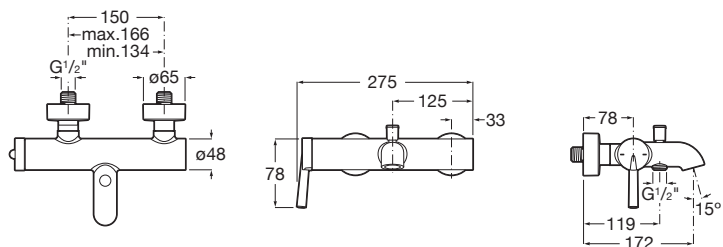


**PALS**

**Bath-shower mixer with automatic diverter**



**TECHNICAL DRAWINGS**



**FEATURES**

Bath-shower mixer with automatic diverter.

Application place: Shower

Faucet type: Single-lever

Finish: Chrome

Handle position: Top

Installation type: Wall-mounted

Waste type: Waste not included



Evershine



Joystick cartridge



## Pals

Straight lines, cylinders and different diameters come together in a modern collection with an array of configurations and originality as a distinguishing trait.



### INSTALLATION AND USER MANUALS



[Installation Handbook](#)