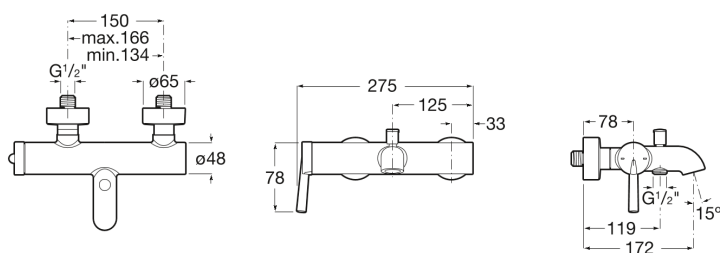


PALS

## Bath-shower mixer with automatic diverter



### TECHNICAL DRAWINGS



### FEATURES

Bath-shower mixer with automatic diverter.

Application place: Shower

Faucet type: Single-lever

Handle position: Top

Installation type: Wall-mounted

Waste type: Waste not included



Evershine



Joystick cartridge



## Pals

Straight lines, cylinders and different diameters come together in a modern collection with an array of configurations and originality as a distinguishing trait.



### INSTALLATION AND USER MANUALS

↓ [Installation Handbook](#)